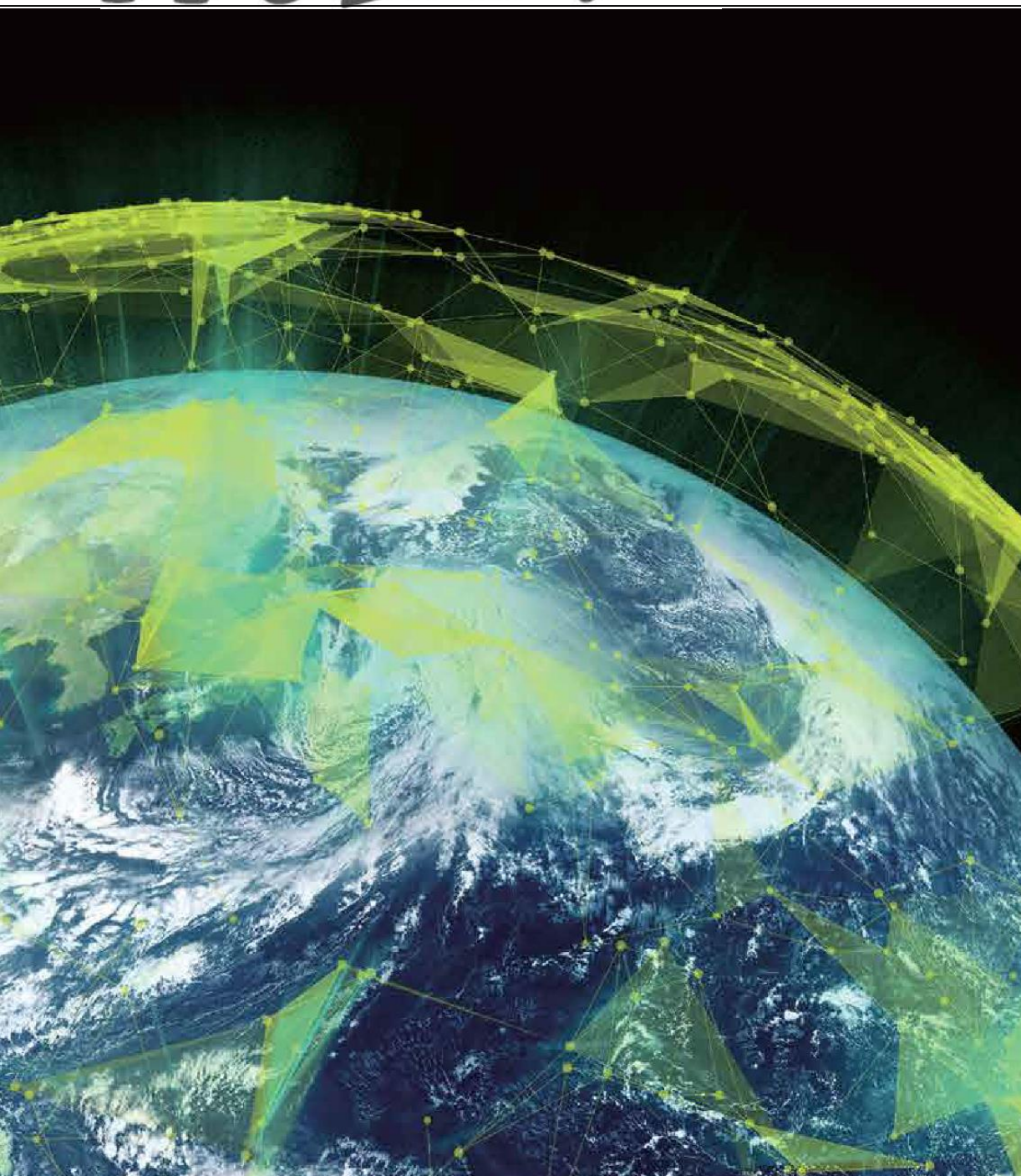


ISUZU

M21

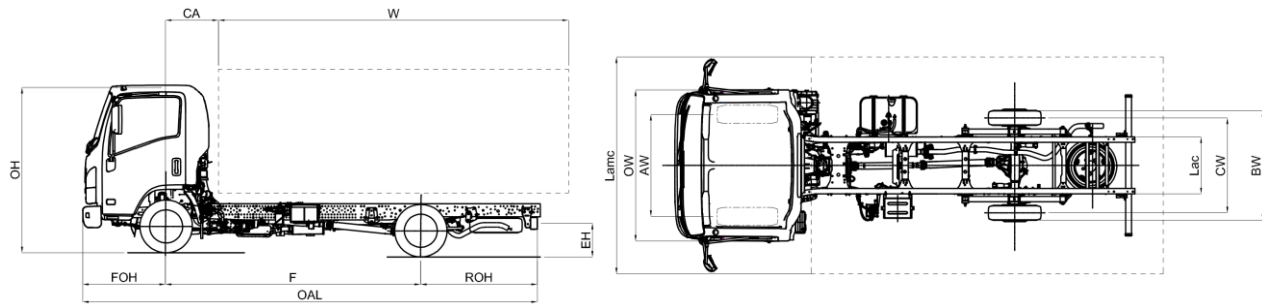


SERIE N 3.5 t

EURO 6b-1

SINGLE TIRE S	PAGE 4-5
ADAPTOR S	PAGE 6-7
SPRING	PAGE 8-9
HEAVY	PAGE 10-11
GROUND	PAGE 12-13
DOUBLE CAB	PAGE 14-15
LARGE	PAGE 16-17
LARGE DOUBLE CAB	PAGE 18-19

DIMENSIONS (mm)



MODEL		M21 SINGLE S	E
F	Wheelbase		2500
DIMENSIONS BEFORE BODY INSTALLATION			
OAL	Overall length		4760
FOH	Front overhang		1100
ROH	Rear overhang		1160
Lac	Frame width		700
EH	Chassis height unladen (nearby rear axle)		715
HH	Minimum road clearance		180
OW	Cab width ⁽³⁾		1815
OH	Overall height unladen		2145
BW	Rear axle width		1645
AW	Front track		1400
CW	Rear track		1395
DIMENSIONS AFTER BODY INSTALLATION			
CA	C/L Front axle to Rear of cab		650
12,1	Rear overhang max.		1465
W (2)	Body length min.		3010
W (2)	Body length ⁽²⁾ max.		3315
W (1)	Body length ⁽¹⁾ max.		3350
5,1	Max. Length with Body C.O.C. ⁽²⁾		5065
6,1	Max. Width with Body ⁽⁴⁾		2275
7,1	Max. Height with Body		4000
Dia	Turning diameter (m) ⁽⁶⁾		9,2
Lmc	Max. Length with Body ⁽¹⁾		5100
Lamc	Max. body width		2275
WEIGHTS BEFORE BODY INSTALLATION			
16,1	Gross Vehicle Weight (GVW)		3500
16,4	Gross Combined Weight (GCW)		7000
14	Kerb weight in running order ⁽⁵⁾		1805
CT	Payload		1695
14,1	Kerb weight on axles (front/rear)		1352/453
WEIGHTS AFTER BODY INSTALLATION			
15	Min. Vehicle Weight with body (driver included)		2030
15,1	Min. permissible weight on axles (front/rear)		1350/680
16,2	Max. permissible weight on axles (front/rear)		1900/2000
18,3	Max. Trailer weight braked		3500
18,4	Max. Trailer weight unbraked		750
19	Max. vertical load on towing hitch		140

- The length of the body refers to an uniformly loaded vehicle, up to the maximum capacity on each axle (these dimensions can root to chassis modifications, please see with the Technical Office)
- The length of the body refers to an uniformly loaded vehicle, up to the maximum capacity on each axle (dimensions declared in C.O.C. with no chassis modifications)
- Turning lights and rearview mirrors excluded
- Width with medium rearview mirror arm (standard): 1945 / 2120; with optional short rearview mirror arms: 1815/1945 – long: 2120/2275
- Kerb weight includes spare wheel, full fuel tank and 75kg for the driver. Optional NEES II with additional weight.
- Curb to curb turning diameter

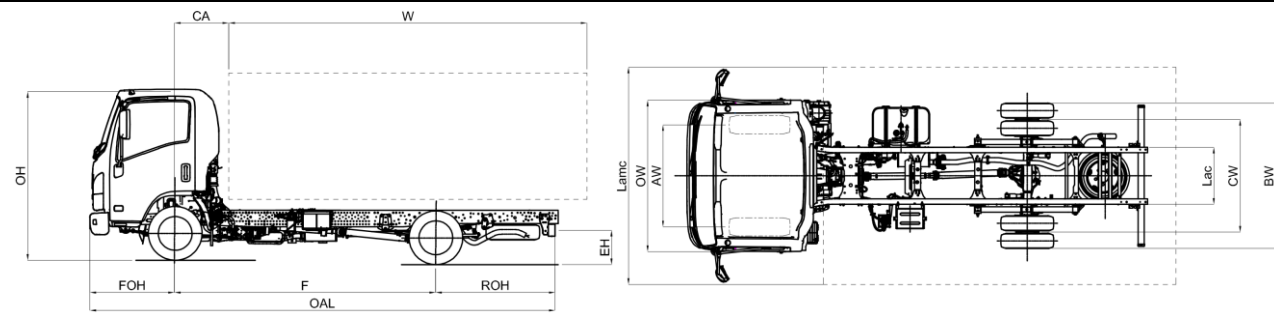
N.B.: Technical and specification data are given as guide only and they can be modified at any time with no prior warning. Nor the constructor neither MIDI Europe can be considered responsible if any of this information is incorrect.

Wheelbase (mm) E 2500

MAY 2019

Variant	Automated transmission NEES II with Torque converter *	
	* always check for availability	
Standard features	<ul style="list-style-type: none"> - Immobiliser - Central locking with remote control - Steering adjustable (tilting and height) - Head lamps control levelling - Fog lamps Fr and Rr - Day-time running lights - Spare wheel - Header tray (Driver/Pass.) - Sunvisor (Driver/Pass.) 	
Optional equipment	Air conditioning	
Engine	ISUZU RZ4EE6N-L Diesel, 4 cylinders 16 valves, common-rail with direct injection, intercooler and Variable nozzle Turbocharger.	
	Displacement:	1898 cm ³
	Power:	90 kW (123 HP) @ 3.200 rpm
	Torque:	320 Nm @ 1.500-2.000 rpm
	Emission standard:	EURO 6b-1 (715/2007*2017/1347Y)
	After-treatment:	EGR - LNT - DPD
Fuel tank	Diesel	57 ℓ
Safety systems	ABS with BAS (Brake assist system) ESC (Electronic stability control) with ASR SRS driver airbag	
Transmission and final drive ratio	ISUZU MVC6W: 4.942 - 2.686 - 1.527 - 1.000 - 0.796 - 0.634 Reverse: 4.597 Final drive ratio: 4.777 (43/9) ISUZU MYY6E: 5.979 - 3.434 - 2.040 - 1.379 - 1.000 - 0.759 Reverse: 5.701 Final drive ratio: 4.300 (43/10)	
Type of transmission	Manual - MVC6W	Automated NEES II - MYY6E
Frame dimensions	Width: 50 mm, Height: 180 mm, Thickness: 4 mm	
Number of places into cab	3	
Tires	205/75 R16C rear single wheels	
Brakes	Hydraulic system, with vacuum brake booster Front: Ventilated discs, Rear: Drums Follow CEE regulations with ABS, independent circuits on both axles Parking brake mechanical at rear of transmission	
Brake dimensions	Front: \varnothing 265 x 35 mm	Rear: \varnothing 290 x 75 mm
Suspensions	Front: Independent by transverse leaf spring Rear: semi-elliptical leaf springs, alloy steel	
Rear differential	\varnothing 220 mm LIGHT DUTY	
Electrical system	12V Nominal voltage - 90A Generator Manual Transmission: 1 x Battery 70Ah Automated Transmission: 2 x Batteries 70Ah	

DIMENSIONS (mm)



MODEL		M21 ADAPTOR S	E	F	H	H WHEEL 16"	
F	Wheelbase		2500	2760	3360	3360	
DIMENSIONS BEFORE BODY INSTALLATION							
OAL	Overall length		4780	5295	6015		
FOH	Front overhang		1100				
ROH	Rear overhang	1180	1435	1555			
Lac	Frame width	700					
EH	Chassis height unladen (nearby rear axle)		705			715	
HH	Minimum road clearance		160			180	
OW	Cab width ⁽³⁾	1815					
OH	Overall height unladen		2125		2135	2160	
BW	Rear axle width	1860					
AW	Front track	1400					
CW	Rear track	1425					
DIMENSIONS AFTER BODY INSTALLATION							
CA	C/L Front axle to Rear of cab	650					
12,1	Rear overhang max.	1465	1720	1790			
W (2)	Body length min.	3030	3545	4265			
W (2)	Body length ⁽²⁾ max.	3315	3830	4500			
W (1)	Body length ⁽¹⁾ max.	3450	3900	4890			
5,1	Max. Length with Body C.O.C. ⁽²⁾	5065	5580	6250			
6,1	Max. Width with Body ⁽⁴⁾	2275					
7,1	Max. Height with Body	4000					
Dia	Turning diameter (m) ⁽⁶⁾	9,2	10	11,9			
Lmc	Max. Length with Body ⁽¹⁾	5200	5650	6640			
Lamc	Max. body width	2275					
WEIGHTS BEFORE BODY INSTALLATION							
16,1	Gross Vehicle Weight (GVW)	3500					
16,4	Gross Combined Weight (GCW)	7000					
14	Kerb weight in running order ⁽⁵⁾	1865	1875	1905	1955		
CT	Payload	1635	1625	1595	1545		
14,1	Kerb weight on axles (front/rear)	1375/490	1347/528	1361/544	1385/570		
WEIGHTS AFTER BODY INSTALLATION							
15	Min. Vehicle Weight with body (driver included)	2065	2120	2195	2225		
15,1	Min. permissible weight on axles (front/rear)	1280/785	1315/805	1355/840	1370/855		
16,2	Max. permissible weight on axles (front/rear)	1900/2200				2100/2435	
18,3	Max. Trailer weight braked	3500					
18,4	Max. Trailer weight unbraked	750					
19	Max. vertical load on towing hitch	140					
<ol style="list-style-type: none"> The length of the body refers to an uniformly loaded vehicle, up to the maximum capacity on each axle (these dimensions can root to chassis modifications, please see with the Technical Office) The length of the body refers to an uniformly loaded vehicle, up to the maximum capacity on each axle (dimensions declared in C.O.C. with no chassis modifications) Turning lights and rearview mirrors excluded Width with medium rearview mirror arm (standard): 1945 / 2120; with optional short rearview mirror arms: 1860/1945 – long: 2120/2275 Kerb weight includes spare wheel, full fuel tank and 75kg for the driver. Optional NEES II with additional weight. Curb to curb turning diameter 							

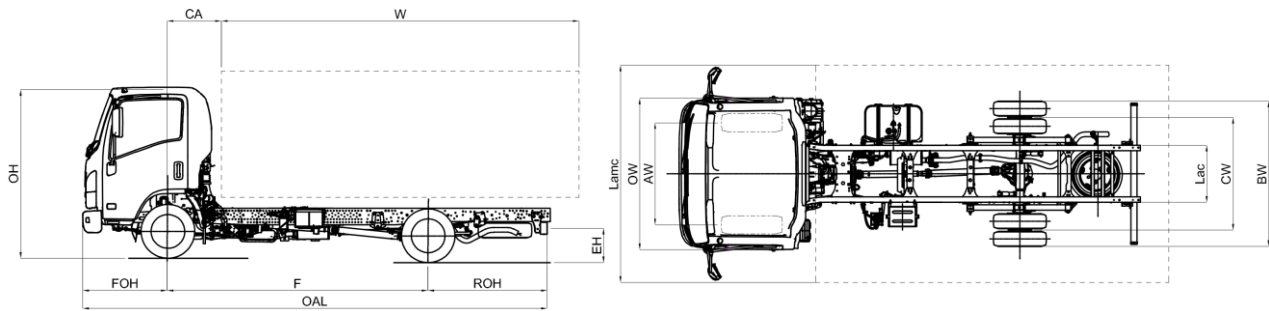
N.B.: Technical and specification data are given as guide only and they can be modified at any time with no prior warning. Nor the constructor neither MIDI Europe can be considered responsible if any of this information is incorrect.

Wheelbases (mm) E 2500 - F 2760 - H 3350

MAY 2019

Variant	Automated transmission NEES II with Torque converter (F/H wheelbases)* * always check for availability	
Standard features	<ul style="list-style-type: none"> - Immobiliser - Central locking with remote control - Steering adjustable (tilting and height) - Head lamps control levelling - Fog lamps Fr and Rr - Day-time running lights - Spare wheel - Header tray (Driver/Pass.) - Sunvisor (Driver/Pass.) 	
Optional equipment	Air conditioning	
Engine	ISUZU RZ4EE6N-L Diesel, 4 cylinders 16 valves, common-rail with direct injection, intercooler and Variable nozzle Turbocharger. Displacement: 1898 cm ³ Power: 90 kW (123 HP) @ 3.200 rpm Torque: 320 Nm @ 1.500-2.000 rpm Emission standard: EURO 6b-1 (715/2007*2017/1347Y) After-treatment: EGR - LNT - DPD	
Fuel tank	Diesel	70 ℓ
Safety systems	ABS with BAS (Brake assist system) ESC (Electronic stability control) with ASR SRS driver airbag	
Transmission and final drive ratio	ISUZU MVC6W: 4.942 - 2.686 - 1.527 - 1.000 - 0.796 - 0.634 Reverse: 4.597 Final drive ratio: 4.555 (41/9) except H WHEEL 16" Final drive ratio: 4.777 (43/9) H WHEEL 16" <hr/> ISUZU MYY6E: 5.979 - 3.434 - 2.040 - 1.379 - 1.000 - 0.759 Reverse: 5.701 Final drive ratio: 4.100 (41/10) except H WHEEL 16" Final drive ratio: 4.300 (43/10) H WHEEL 16"	
Type of transmission	Manual - MVC6W	Automated NEES II - MYY6E
Frame dimensions	Width: 50 mm, Height: 180 mm, Thickness: 4 mm	
Number of places into cab	3	
Tires	205/70 R15C rear twin wheels	205/75 R16C (H WHEEL 16") rear twin wheels
Brakes	Hydraulic system, with vacuum brake booster Front: Ventilated discs, Rear: Ventilated discs Follow CEE regulations with ABS, independent circuits on both axles Parking brake mechanical at rear of transmission	
Brake dimensions	Front: ϕ 265 x 35 mm Front: ϕ 293 x 40 mm (H WHEEL 16")	Rear: ϕ 275 x 30 mm
Suspensions	Front: Independent by transverse leaf spring Rear: semi-elliptical leaf springs, alloy steel	
Rear differential	ϕ 220 mm LIGHT DUTY	
Electrical system	12V Nominal voltage - 90A Generator Manual Transmission: 1 x Battery 70Ah Automated Transmission: 2 x Batteries 70Ah	

DIMENSIONS (mm)



MODEL		M21 SPRING	E	F	H
F	Wheelbase		2480	2750	3350
DIMENSIONS BEFORE BODY INSTALLATION					
OAL	Overall length		4780	5295	6015
FOH	Front overhang			1110	
ROH	Rear overhang		1190	1435	1555
Lac	Frame width			700	
EH	Chassis height unladen (nearby rear axle)		730		720
HH	Minimum road clearance			190	
OW	Cab width ⁽³⁾			1815	
OH	Overall height unladen		2150		2160
BW	Rear axle width			1860	
AW	Front track			1475	
CW	Rear track			1425	
DIMENSIONS AFTER BODY INSTALLATION					
CA	C/L Front axle to Rear of cab			650	
12,1	Rear overhang max.		1475	1720	1790
W (2)	Body length min.		3020	3535	4255
W (2)	Body length ⁽²⁾ max.		3305	3820	4490
W (1)	Body length ⁽¹⁾ max.		3430	3900	4870
5,1	Max. Length with Body C.O.C. ⁽²⁾		5065	5580	6250
6,1	Max. Width with Body ⁽⁴⁾			2275	
7,1	Max. Height with Body			4000	
Dia	Turning diameter (m) ⁽⁶⁾		10,3	11,3	13,5
Lmc	Max. Length with Body ⁽¹⁾		5190	5660	6630
Lamc	Max. body width			2275	
WEIGHTS BEFORE BODY INSTALLATION					
16,1	Gross Vehicle Weight (GVW)			3500	
16,4	Gross Combined Weight (GCW)			7000	
14	Kerb weight in running order ⁽⁵⁾		1945	1955	1995
CT	Payload		1555	1545	1505
14,1	Kerb weight on axles (front/rear)		1435/510	1399/556	1420/575
WEIGHTS AFTER BODY INSTALLATION					
15	Min. Vehicle Weight with body (driver included)		2125	2180	2255
15,1	Min. permissible weight on axles (front/rear)		1310/815	1345/835	1390/865
16,2	Max. permissible weight on axles (front/rear)			2100/2435	
18,3	Max. Trailer weight braked			3500	
18,4	Max. Trailer weight unbraked			750	
19	Max. vertical load on towing hitch			140	
<p>1. The length of the body refers to an uniformly loaded vehicle, up to the maximum capacity on each axle (these dimensions can root to chassis modifications, please see with the Technical Office)</p> <p>2. The length of the body refers to an uniformly loaded vehicle, up to the maximum capacity on each axle (dimensions declared in C.O.C. with no chassis modifications)</p> <p>3. Turning lights and rearview mirrors excluded</p> <p>4. Width with medium rearview mirror arm (standard): 1945 / 2120; with optional short rearview mirror arms: 1860/1945 – long: 2120/2275</p> <p>5. Kerb weight includes spare wheel, full fuel tank and 75kg for the driver. Optional NEES II with additional weight</p> <p>6. Curb to curb turning diameter</p>					

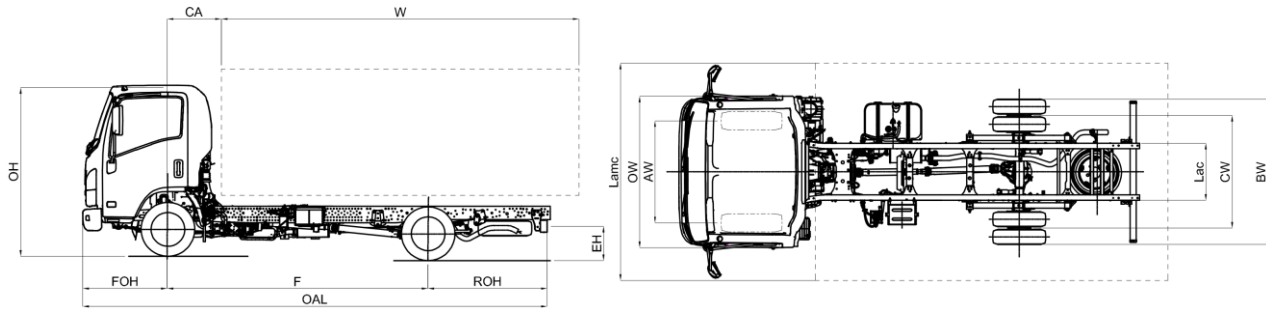
N.B.: Technical and specification data are given as guide only and they can be modified at any time with no prior warning. Nor the constructor neither MIDI Europe can be considered responsible if any of this information is incorrect.

Wheelbases (mm) E 2480 - F 2750 - H 3350

MAY 2019

Variant	Automated transmission NEES II with Torque converter (E/F wheelbases)* Double airbag (only on E wheelbase)* <small>* always check for availability</small>	
Standard features	<ul style="list-style-type: none"> - Immobiliser - Central locking with remote control - Steering adjustable (tilting and height) 	<ul style="list-style-type: none"> - Head lamps control levelling - Fog lamps Fr and Rr - Day-time running lights - Spare wheel - Header tray (Driver/Pass.) - Sunvisor (Driver/Pass.)
Optional equipment	Air conditioning	
Engine	ISUZU RZ4EE6N-L Diesel, 4 cylinders 16 valves, common-rail with direct injection, intercooler and Variable nozzle Turbocharger. Displacement: 1898 cm ³ Power: 90 kW (123 HP) @ 3.200 rpm Torque: 320 Nm @ 1.500-2.000 rpm Emission standard: EURO 6b-1 (715/2007*2017/1347Y) After-treatment: EGR - LNT - DPD	
Fuel tank	Diesel	70 ℓ
Safety systems	ABS with BAS (Brake assist system) ESC (Electronic stability control) with ASR SRS driver airbag	
Transmission and final drive ratio	ISUZU MVC6W: 4.942 - 2.686 - 1.527 - 1.000 - 0.796 - 0.634 Reverse: 4.597 Final drive ratio: 4.777 (43/9) <hr/> ISUZU MYY6E: 5.979 - 3.434 - 2.040 - 1.379 - 1.000 - 0.759 Reverse: 5.701 Final drive ratio: 4.300 (43/10)	
Type of transmission	Manual - MVC6W	Automated NEES II - MYY6E
Frame dimensions	Width: 65 mm, Height: 180 mm, Thickness: 4 mm	
Number of places into cab	3	
Tires	205/75 R16C rear twin wheels	
Brakes	Hydraulic system, with vacuum brake booster Front: Ventilated discs, Rear: Ventilated discs Follow CEE regulations with ABS, independent circuits on both axles Parking brake mechanical at rear of transmission	
Brake dimensions	Front: \varnothing 293 x 40 mm	Rear: \varnothing 275 x 30 mm
Suspensions	Front: rigid axle with semi-elliptical leaf springs, alloy steel Rear: semi-elliptical leaf springs, alloy steel	
Rear differential	\varnothing 220 mm LIGHT DUTY	
Electrical system	12V Nominal voltage - 90A Generator Manual Transmission: 1 x Battery 70Ah Automated Transmission: 2 x Batteries 70Ah	

DIMENSIONS (mm)



MODEL		M21 HEAVY	E
F	Wheelbase		2480
DIMENSIONS BEFORE BODY INSTALLATION			
OAL	Overall length		4780
FOH	Front overhang		1110
ROH	Rear overhang		1190
Lac	Frame width		700
EH	Chassis height unladen (nearby rear axle)		730
HH	Minimum road clearance		190
OW	Cab width ⁽³⁾		1815
OH	Overall height unladen		2150
BW	Rear axle width		1860
AW	Front track		1475
CW	Rear track		1425
DIMENSIONS AFTER BODY INSTALLATION			
CA	C/L Front axle to Rear of cab		650
12,1	Rear overhang max.		1475
W (2)	Body length min.		3020
W (2)	Body length ⁽²⁾ max.		3305
W (1)	Body length ⁽¹⁾ max.		3430
5,1	Max. Length with Body C.O.C. ⁽²⁾		5065
6,1	Max. Width with Body ⁽⁴⁾		2275
7,1	Max. Height with Body		4000
Dia	Turning diameter (m) ⁽⁶⁾		10,3
Lmc	Max. Length with Body ⁽¹⁾		5190
Lamc	Max. body width		2275
WEIGHTS BEFORE BODY INSTALLATION			
16,1	Gross Vehicle Weight (GVW)		3500
16,4	Gross Combined Weight (GCW)		7000
14	Kerb weight in running order ⁽⁵⁾		1980
CT	Payload		1520
14,1	Kerb weight on axles (front/rear)		1436/544
WEIGHTS AFTER BODY INSTALLATION			
15	Min. Vehicle Weight with body (driver included)		2125
15,1	Min. permissible weight on axles (front/rear)		1310/815
16,2	Max. permissible weight on axles (front/rear)		2100/2435
18,3	Max. Trailer weight braked		3500
18,4	Max. Trailer weight unbraked		750
19	Max. vertical load on towing hitch		140
<p>1. The length of the body refers to a uniformly loaded vehicle, up to the maximum capacity on each axle (these dimensions can root to chassis modifications, please see with the Technical Office)</p> <p>2. The length of the body refers to a uniformly loaded vehicle, up to the maximum capacity on each axle (dimensions declared in C.O.C. with no chassis modifications)</p> <p>3. Turning lights and rearview mirrors excluded</p> <p>4. Width with medium rearview mirror arm (standard): 1945 / 2120; with optional short rearview mirror arms: 1860/1945 – long: 2120/2275</p> <p>5. Kerb weight includes spare wheel, full fuel tank and 75kg for the driver. Optional NEES II with additional weight</p> <p>6. Curb to curb turning diameter</p>			

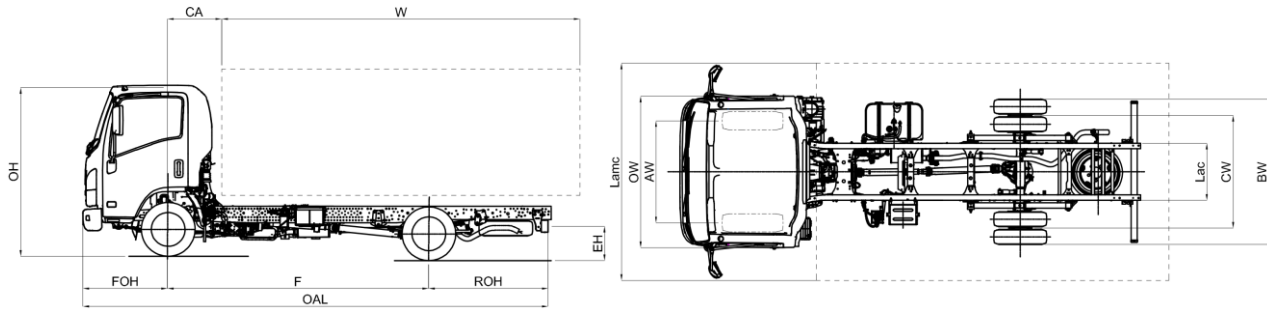
N.B.: Technical and specification data are given as guide only and they can be modified at any time with no prior warning. Nor the constructor neither MIDI Europe can be considered responsible if any of this information is incorrect.

Wheelbase (mm) E 2480

MAY 2019

Variant	Automated transmission NEES II with Torque converter (right-hand drive)* Right-hand drive* *always check for availability	
Standard features	<ul style="list-style-type: none"> - Immobiliser - Central locking with remote control - Steering adjustable (tilting and height) 	<ul style="list-style-type: none"> - Head lamps control levelling - Fog lamps Fr and Rr - Day-time running lights - Spare wheel - Header tray (Driver/Pass.) - Sunvisor (Driver/Pass.)
Optional equipment	Air conditioning	
Engine	ISUZU RZ4EE6N-L Diesel, 4 cylinders 16 valves, common-rail with direct injection, intercooler and Variable nozzle Turbocharger. Displacement: 1898 cm ³ Power: 90 kW (123 HP) @ 3.200 rpm Torque: 320 Nm @ 1.500-2.000 rpm Emission standard: EURO 6b-1 (715/2007*2017/1347Y) After-treatment: EGR - LNT - DPD	
Fuel tank	Diesel	57 ℓ
Safety systems	ABS with BAS (Brake assist system) ESC (Electronic stability control) with ASR SRS driver airbag	
Transmission and final drive ratio	ISUZU MVC6W: 4.942 - 2.686 - 1.527 - 1.000 - 0.796 - 0.634 Reverse: 4.597 Final drive ratio: 4.777 (43/9) ISUZU MYY6E: 5.979 - 3.434 - 2.040 - 1.379 - 1.000 - 0.759 Reverse: 5.701 Final drive ratio: 4.300 (43/10)	
Type of transmission	Manual - MVC6W	Automated NEES II - MYY6E
Frame dimensions	Width: 65 mm, Height: 180 mm, Thickness: 4 mm	
Number of places into cab	3	
Tires	205/75 R16C rear twin wheels	
Brakes	Hydraulic system, with vacuum brake booster Front: Ventilated discs, Rear: Ventilated discs Follow CEE regulations with ABS, independent circuits on both axles Parking brake mechanical at rear of transmission	
Brake dimensions	Front: \varnothing 293 x 40 mm	Rear: \varnothing 275 x 30 mm
Suspensions	Front: rigid axle with semi-elliptical leaf springs, alloy steel Rear: semi-elliptical leaf springs, alloy steel	
Rear differential	\varnothing 292 mm HEAVY DUTY	
Electrical system	12V Nominal voltage - 90A Generator Manual Transmission: 1 x Battery 70Ah Automated Transmission: 2 x Batteries 70Ah	

DIMENSIONS (mm)



MODEL		M21 GROUND	E	F	H
F	Wheelbase		2480	2750	3350
DIMENSIONS BEFORE BODY INSTALLATION					
OAL	Overall length		4780	5295	6015
FOH	Front overhang			1110	
ROH	Rear overhang		1190	1435	1555
Lac	Frame width			700	
EH	Chassis height unladen (nearby rear axle)		720		710
HH	Minimum road clearance			185	
OW	Cab width ⁽³⁾			1815	
OH	Overall height unladen		2140		2150
BW	Rear axle width			1855	
AW	Front track			1475	
CW	Rear track			1425	
DIMENSIONS AFTER BODY INSTALLATION					
CA	C/L Front axle to Rear of cab			650	
12,1	Rear overhang max.		1475	1720	1790
W (2)	Body length min.		3020	3535	4255
W (2)	Body length ⁽²⁾ max.		3305	3820	4490
W (1)	Body length ⁽¹⁾ max.		3430	3900	4870
5,1	Max. Length with Body C.O.C. ⁽²⁾		5065	5580	6250
6,1	Max. Width with Body ⁽⁴⁾			2275	
7,1	Max. Height with Body			4000	
Dia	Turning diameter (m) ⁽⁶⁾		10,3	11,3	13,5
Lmc	Max. Length with Body ⁽¹⁾		5190	5660	6630
Lamc	Max. body width			2275	
WEIGHTS BEFORE BODY INSTALLATION					
16,1	Gross Vehicle Weight (GVW)			3500	
16,4	Gross Combined Weight (GCW)			7000	
14	Kerb weight in running order ⁽⁵⁾		1855	1875	1905
CT	Payload		1645	1625	1595
14,1	Kerb weight on axles (front/rear)		1375/480	1371/504	1382/523
WEIGHTS AFTER BODY INSTALLATION					
15	Min. Vehicle Weight with body (driver included)		2120	2175	2250
15,1	Min. permissible weight on axles (front/rear)		1310/810	1345/830	1390/860
16,2	Max. permissible weight on axles (front/rear)			1900/2200	
18,3	Max. Trailer weight braked			3500	
18,4	Max. Trailer weight unbraked			750	
19	Max. vertical load on towing hitch			140	
1. The length of the body refers to a uniformly loaded vehicle, up to the maximum capacity on each axle (these dimensions can root to chassis modifications, please see with the Technical Office) 2. The length of the body refers to a uniformly loaded vehicle, up to the maximum capacity on each axle (dimensions declared in C.O.C. with no chassis modifications) 3. Turning lights and rearview mirrors excluded 4. Width with medium rearview mirror arm (standard): 1945 / 2120; with optional short rearview mirror arms: 1855/1945 – long: 2120/2275 5. Kerb weight includes spare wheel, full fuel tank and 75kg for the driver 6. Curb to curb turning diameter					

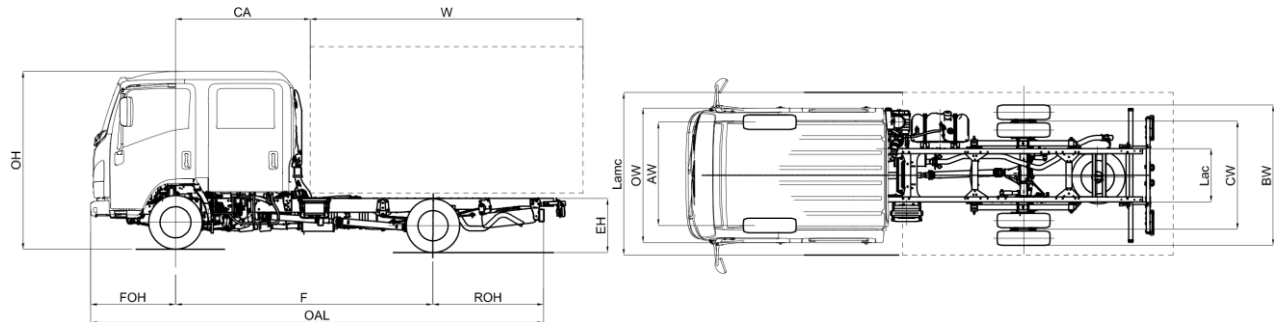
N.B.: Technical and specification data are given as guide only and they can be modified at any time with no prior warning. Nor the constructor neither MIDI Europe can be considered responsible if any of this information is incorrect.

Wheelbases (mm) E 2480 - F 2750 - H 3350

MAY 2019

Variant	
Standard features	<ul style="list-style-type: none"> - EGR - DPD - LNT - Power operated windows - Reverse warning buzzer - Driver suspended seat - Immobiliser - Central locking with remote control - Steering adjustable (tilting and height) - Head lamps control levelling - Fog lamps Fr and Rr - Day-time running lights - Sunvisor (Driver)
Optional equipment	Air conditioning
Engine	<p>ISUZU RZ4EE6N-L Diesel, 4 cylinders 16 valves, common-rail with direct injection, intercooler and Variable nozzle Turbocharger.</p> <p>Displacement: 1898 cm³</p> <p>Power: 90 kW (123 HP) @ 3.200 rpm</p> <p>Torque: 320 Nm @ 1.500-2.000 rpm</p> <p>Emission standard: EURO 6b-1 (715/2007*2017/1347Y)</p> <p>After-treatment: EGR - LNT - DPD</p>
Fuel tank	Diesel 57 ℓ
Safety systems	<p>ABS with BAS (Brake assist system)</p> <p>ESC (Electronic stability control) with ASR</p>
Transmission and final drive ratio	<p>ISUZU MVC6W: 4.942 - 2.686 - 1.527 - 1.000 - 0.796 - 0.634</p> <p>Reverse: 4.597</p> <p>Final drive ratio: 4.777 (43/9)</p>
Type of transmission	Manual - MVC6W
Frame dimensions	Width: 65 mm, Height: 180 mm, Thickness: 4 mm
Number of places into cab	3
Tires	<p>195/75 R16C rear twin wheels</p> <p>First delivered vehicles could be equipped with 205/75 R16C tires (+15kg, distribution: 5kg/10kg)</p>
Brakes	<p>Hydraulic system, with vacuum brake booster</p> <p>Front: Ventilated discs, Rear: Ventilated discs</p> <p>Follow CEE regulations with ABS, independent circuits on both axles</p> <p>Parking brake mechanical at rear of transmission</p>
Brake dimensions	<p>Front: φ293 x 40 mm</p> <p>Rear: φ275 x 30 mm</p>
Suspensions	<p>Front: rigid axle with semi-elliptical leaf springs, alloy steel</p> <p>Rear: semi-elliptical leaf springs, alloy steel</p>
Rear differential	φ220 mm LIGHT DUTY
Electrical system	<p>12V Nominal voltage - 90A Generator</p> <p>Manual Transmission: 1 x Battery 70Ah</p>

DIMENSIONS (mm)



MODEL		M21 DOUBLE CAB	H
F	Wheelbase		3350
DIMENSIONS BEFORE BODY INSTALLATION			
OAL	Overall length		6015
FOH	Front overhang		1110
ROH	Rear overhang		1555
Lac	Frame width		700
EH	Chassis height unladen (nearby rear axle)		715
HH	Minimum road clearance		190
OW	Cab width ⁽³⁾		1815
OH	Overall height unladen		2225
BW	Rear axle width		1860
AW	Front track		1475
CW	Rear track		1425
DIMENSIONS AFTER BODY INSTALLATION			
CA	C/L Front axle to Rear of cab		1700
12,1	Rear overhang max.		1790
W (2)	Body length min.		3205
W (2)	Body length ⁽²⁾ max.		3440
W (1)	Body length ⁽¹⁾ max.		3828
5,1	Max. Length with Body C.O.C. ⁽²⁾		6250
6,1	Max. Width with Body ⁽⁴⁾		2275
7,1	Max. Height with Body		4000
Dia	Turning diameter (m) ⁽⁶⁾		13,5
Lmc	Max. Length with Body ⁽¹⁾		6638
Lamc	Max. body width		2275
WEIGHTS BEFORE BODY INSTALLATION			
16,1	Gross Vehicle Weight (GVW)		3500
16,4	Gross Combined Weight (GCW)		7000
14	Kerb weight in running order ⁽⁵⁾		2238
CT	Payload		1262
14,1	Kerb weight on axles (front/rear)		1528/710
WEIGHTS AFTER BODY INSTALLATION			
15	Min. Vehicle Weight with body (driver included)		2395
15,1	Min. permissible weight on axles (front/rear)		1465/930
16,2	Max. permissible weight on axles (front/rear)		2100/2435
18,3	Max. Trailer weight braked		3500
18,4	Max. Trailer weight unbraked		750
19	Max. vertical load on towing hitch		140
<ol style="list-style-type: none"> 1. The length of the body refers to an uniformly loaded vehicle, up to the maximum capacity on each axle (these dimensions can root to chassis modifications, please see with the Technical Office) 2. The length of the body refers to an uniformly loaded vehicle, up to the maximum capacity on each axle (dimensions declared in C.O.C. with no chassis modifications) 3. Turning lights and rearview mirrors excluded 4. Width with medium rearview mirror arm (standard): 1945 / 2120; with optional short rearview mirror arms: 1860/1945 – long: 2120/2275 5. Kerb weight includes spare wheel, full fuel tank and 75kg for the driver. Optional NEES II with additional weight 6. Curb to curb turning diameter 			

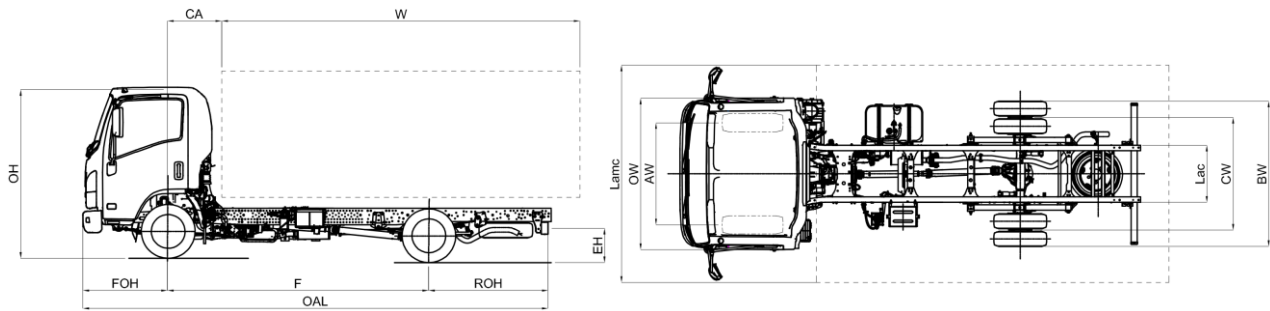
N.B.: Technical and specification data are given as guide only and they can be modified at any time with no prior warning. Nor the constructor neither MIDI Europe can be considered responsible if any of this information is incorrect.

Wheelbase (mm) H 3350

MAY 2019

Variant	Automated transmission NEES II with Torque converter*	
	* always check for availability	
Standard features	<ul style="list-style-type: none"> - EGR - DPD - LNT - Power operated windows - Reverse warning buzzer - Radio with USB 	
	<ul style="list-style-type: none"> - Immobiliser - Central locking with remote control - Steering adjustable (tilting and height) 	<ul style="list-style-type: none"> - Head lamps control levelling - Fog lamps Fr and Rr - Day-time running lights - Spare wheel - Header tray (Driver/Pass.) - Sunvisor (Driver/Pass.)
Optional equipment	Air conditioning	
Engine	ISUZU RZ4EE6N-L Diesel, 4 cylinders 16 valves, common-rail with direct injection, intercooler and Variable nozzle Turbocharger.	
	Displacement:	1898 cm ³
	Power:	90 kW (123 HP) @ 3.200 rpm
	Torque:	320 Nm @ 1.500-2.000 rpm
	Emission standard:	EURO 6b-1 (715/2007*2017/1347Y)
	After-treatment:	EGR - LNT - DPD
Fuel tank	Diesel	70 l
Safety systems	ABS with BAS (Brake assist system) ESC (Electronic stability control) with ASR SRS driver airbag	
Transmission and final drive ratio	ISUZU MVC6W: 4.942 - 2.686 - 1.527 - 1.000 - 0.796 - 0.634 Reverse: 4.597 Final drive ratio: 4.777 (43/9) <hr/> ISUZU MYY6E: 5.979 - 3.434 - 2.040 - 1.379 - 1.000 - 0.759 Reverse: 5.701 Final drive ratio: 4.300 (43/10)	
Type of transmission	Manual - MVC6W	Automated NEES II - MYY6E
Frame dimensions	Width: 65 mm, Height: 180 mm, Thickness: 4 mm	
Number of places into cab	6	
Tires	205/75 R16C rear twin wheels	
Brakes	Hydraulic system, with vacuum brake booster Front: Ventilated discs, Rear: Ventilated discs Follow CEE regulations with ABS, independent circuits on both axles Parking brake mechanical at rear of transmission	
Brake dimensions	Front: \varnothing 293 x 40 mm	Rear: \varnothing 275 x 30 mm
Suspensions	Front: rigid axle with semi-elliptical leaf springs, alloy steel Rear: semi-elliptical leaf springs, alloy steel	
Rear differential	\varnothing 220 mm LIGHT DUTY	
Electrical system	12V Nominal voltage - 90A Generator Manual Transmission: 1 x Battery 70Ah Automated Transmission: 2 x Batteries 70Ah	

DIMENSIONS (mm)



MODEL		M21 LARGE	F	H
F	Wheelbase		2800	3395
DIMENSIONS BEFORE BODY INSTALLATION				
OAL	Overall length		5235	6085
FOH	Front overhang			1110
ROH	Rear overhang		1330	1580
Lac	Frame width			750
EH	Chassis height unladen (nearby rear axle)		725	720
HH	Minimum road clearance			165
OW	Cab width ⁽³⁾			2040
OH	Overall height unladen			2225
BW	Rear axle width			1920
AW	Front track			1680
CW	Rear track			1485
DIMENSIONS AFTER BODY INSTALLATION				
CA	C/L Front axle to Rear of cab			650
12,1	Rear overhang max.		1620	1870
W (2)	Body length min.		3480	4325
W (2)	Body length ⁽²⁾ max.		3770	4615
W (1)	Body length ⁽¹⁾ max.		3980	4950
5,1	Max. Length with Body C.O.C. ⁽²⁾		5530	6375
6,1	Max. Width with Body ⁽⁴⁾			2500
7,1	Max. Height with Body			4000
Dia	Turning diameter (m) ⁽⁶⁾		10,0	11,8
Lmc	Max. Length with Body ⁽¹⁾		5740	6710
Lamc	Max. body width			2500
WEIGHTS BEFORE BODY INSTALLATION				
16,1	Gross Vehicle Weight (GVW)			3500
16,4	Gross Combined Weight (GCW)			7000
14	Kerb weight in running order ⁽⁵⁾		2135	2185
CT	Payload		1365	1315
14,1	Kerb weight on axles (front/rear)		1525/610	1497/688
WEIGHTS AFTER BODY INSTALLATION				
15	Min. Vehicle Weight with body (driver included)		2350	2455
15,1	Min. permissible weight on axles (front/rear)		1460/890	1485/970
16,2	Max. permissible weight on axles (front/rear)			2100/2435
18,3	Max. Trailer weight braked			3500
18,4	Max. Trailer weight unbraked			750
19	Max. vertical load on towing hitch			140
<p>1. The length of the body refers to an uniformly loaded vehicle, up to the maximum capacity on each axle (these dimensions can root to chassis modifications, please see with the Technical Office)</p> <p>2. The length of the body refers to an uniformly loaded vehicle, up to the maximum capacity on each axle (dimensions declared in C.O.C. with no chassis modifications)</p> <p>3. Turning lights and rearview mirrors excluded</p> <p>4. Width with medium rearview mirror arm (standard): 2170 / 2345; with optional short rearview mirror arms: 2040/2170 – long: 2345/2500</p> <p>5. Kerb weight includes spare wheel, full fuel tank and 75kg for the driver. Optional NEES II with additional weight</p> <p>6. Curb to curb turning diameter</p>				

N.B.: Technical and specification data are given as guide only and they can be modified at any time with no prior warning. Nor the constructor neither MIDI Europe can be considered responsible if any of this information is incorrect.

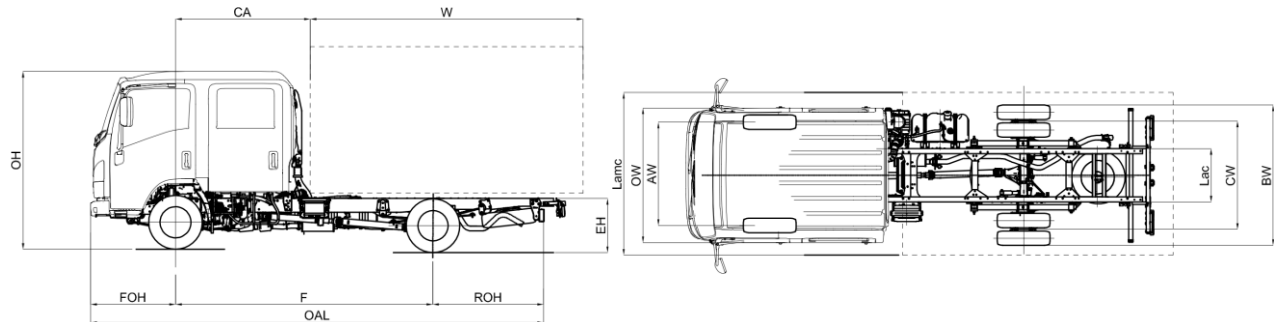
Wheelbases (mm) F 2800 - H 3395

MAY 2019

Variant	Automated transmission NEES II with Torque converter*	
	* always check for availability	
Standard features	<ul style="list-style-type: none"> - Immobiliser - Central locking with remote control - Steering adjustable (tilting and height) - Outside rearview mirrors electric and heated - Head lamps control levelling - Fog lamps Fr and Rr - Day-time running lights - Spare wheel - Header tray (Driver) - Sunvisor (Driver) 	
Optional equipment	Air conditioning	
Engine	ISUZU RZ4EE6N-L Diesel, 4 cylinders 16 valves, common-rail with direct injection, intercooler and Variable nozzle Turbocharger.	
	Displacement:	1898 cm ³
	Power:	90 kW (123 HP) @ 3.200 rpm
	Torque:	320 Nm @ 1.500-2.000 rpm
	Emission standard:	EURO 6b-1 (715/2007*2017/1347Y)
	After-treatment:	EGR - LNT - DPD
Fuel tank	Diesel	90 ℓ
Safety systems	ABS with BAS (Brake assist system) ESC (Electronic stability control) with ASR SRS driver airbag	
Transmission and final drive ratio	ISUZU MVC6W: 4.942 - 2.686 - 1.527 - 1.000 - 0.796 - 0.634 Reverse: 4.597 Final drive ratio: 4.777 (43/9) ISUZU MYY6E: 5.979 - 3.434 - 2.040 - 1.379 - 1.000 - 0.759 Reverse: 5.701 Final drive ratio: 4.300 (43/10)	
Type of transmission	Manual - MVC6W	Automated NEES II - MYY6E
Frame dimensions	Width: 70 mm, Height: 214 mm, Thickness: 5 mm	
Number of places into cab	3	
Tires	205/75 R16C rear twin wheels	
Brakes	Hydraulic system, with vacuum brake booster Front: Ventilated discs, Rear: Ventilated discs Follow CEE regulations with ABS, independent circuits on both axles Parking brake mechanical at rear of transmission	
Brake dimensions	Front: \varnothing 293 x 40 mm	Rear: \varnothing 275 x 30 mm
Suspensions	Front: rigid axle with semi-elliptical leaf springs, alloy steel Rear: semi-elliptical leaf springs, alloy steel	
Rear differential	\varnothing 292 mm HEAVY DUTY	
Electrical system	12V Nominal voltage - 90A Generator Manual Transmission: 1 x Battery 70Ah Automated Transmission: 2 x Batteries 70Ah	

LARGE DOUBLE CAB

DIMENSIONS (mm)



MODEL		M21 LARGE DOUBLE CAB	H
F	Wheelbase		3395
DIMENSIONS BEFORE BODY INSTALLATION			
OAL	Overall length		6085
FOH	Front overhang		1110
ROH	Rear overhang		1580
Lac	Frame width		750
EH	Chassis height unladen (nearby rear axle)		720
HH	Minimum road clearance		165
OW	Cab width ⁽³⁾		2040
OH	Overall height unladen		2225
BW	Rear axle width		1920
AW	Front track		1680
CW	Rear track		1485
DIMENSIONS AFTER BODY INSTALLATION			
CA	C/L Front axle to Rear of cab		1700
12,1	Rear overhang max.		1870
W (2)	Body length min.		3275
W (2)	Body length ⁽²⁾ max.		3565
W (1)	Body length ⁽¹⁾ max.		3900
5,1	Max. Length with Body C.O.C. ⁽²⁾		6375
6,1	Max. Width with Body ⁽⁴⁾		2500
7,1	Max. Height with Body		4000
Dia	Turning diameter (m) ⁽⁶⁾		11,8
Lmc	Max. Length with Body ⁽¹⁾		6710
Lamc	Max. body width		2500
WEIGHTS BEFORE BODY INSTALLATION			
16,1	Gross Vehicle Weight (GVW)		3500
16,4	Gross Combined Weight (GCW)		7000
14	Kerb weight in running order ⁽⁵⁾		2439
CT	Payload		1061
14,1	Kerb weight on axles (front/rear)		1683/756
WEIGHTS AFTER BODY INSTALLATION			
15	Min. Vehicle Weight with body (driver included)		2640
15,1	Min. permissible weight on axles (front/rear)		1590/1050
16,2	Max. permissible weight on axles (front/rear)		2100/2435
18,3	Max. Trailer weight braked		3500
18,4	Max. Trailer weight unbraked		750
19	Max. vertical load on towing hitch		140

- The length of the body refers to an uniformly loaded vehicle, up to the maximum capacity on each axle (these dimensions can root to chassis modifications, please see with the Technical Office)
- The length of the body refers to an uniformly loaded vehicle, up to the maximum capacity on each axle (dimensions declared in C.O.C. with no chassis modifications)
- Turning lights and rearview mirrors excluded
- Width with medium rearview mirror arm (standard): 2170 / 2345; with optional short rearview mirror arms: 2040/2170 – long: 2345/2500
- Kerb weight includes spare wheel, full fuel tank and 75kg for the driver. Optional NEES II with additional weight
- Curb to curb turning diameter

N.B.: Technical and specification data are given as guide only and they can be modified at any time with no prior warning. Nor the constructor neither MIDI Europe can be considered responsible if any of this information is incorrect.

LARGE DOUBLE CAB

Wheelbase (mm) H 3395

MAY 2019

Variant	Automated transmission NEES II with Torque converter*	
	* always check for availability	
Standard features	<ul style="list-style-type: none"> - Immobiliser - Central locking with remote control - Steering adjustable (tilting and height) - Outside rearview mirrors electric and heated - Head lamps control levelling - Fog lamps Fr and Rr - Day-time running lights - Spare wheel - Header tray (Driver) - Sunvisor (Driver/Pass.) 	
Optional equipment	Air conditioning	
Engine	ISUZU RZ4EE6N-L Diesel, 4 cylinders 16 valves, common-rail with direct injection, intercooler and Variable nozzle Turbocharger.	
	Displacement:	1898 cm ³
	Power:	90 kW (123 HP) @ 3.200 rpm
	Torque:	320 Nm @ 1.500-2.000 rpm
	Emission standard:	EURO 6b-1 (715/2007*2017/1347Y)
	After-treatment:	EGR - LNT - DPD
Fuel tank	Diesel	90 ℓ
Safety systems	ABS with BAS (Brake assist system) ESC (Electronic stability control) with ASR SRS driver airbag	
Transmission and final drive ratio	ISUZU MVC6W: 4.942 - 2.686 - 1.527 - 1.000 - 0.796 - 0.634 Reverse: 4.597 Final drive ratio: 4.777 (43/9) ISUZU MYY6E: 5.979 - 3.434 - 2.040 - 1.379 - 1.000 - 0.759 Reverse: 5.701 Final drive ratio: 4.300 (43/10)	
Type of transmission	Manual - MVC6W	Automated NEES II - MYY6E
Frame dimensions	Width: 70 mm, Height: 214 mm, Thickness: 5 mm	
Number of places into cab	7	
Tires	205/75 R16C rear twin wheels	
Brakes	Hydraulic system, with vacuum brake booster Front: Ventilated discs, Rear: Ventilated discs Follow CEE regulations with ABS, independent circuits on both axles Parking brake mechanical at rear of transmission	
Brake dimensions	Front: \varnothing 293 x 40 mm	Rear: \varnothing 275 x 30 mm
Suspensions	Front: rigid axle with semi-elliptical leaf springs, alloy steel Rear: semi-elliptical leaf springs, alloy steel	
Rear differential	\varnothing 292 mm HEAVY DUTY	
Electrical system	12V Nominal voltage - 90A Generator Manual Transmission: 1 x Battery 70Ah Automated Transmission: 2 x Batteries 70Ah	

M21

ISUZU

ISUZU MOTORS LIMITED

www.isuzu.it
www.isuzu.fr
www.isuzu.ch
www.isuzu.es
www.isuzutrucks.cz
www.isuzutrucks.sk
www.isuzutrucks.pl
www.isuzuromania.com.ro
www.isuzutrucks.hu

The information in this catalogue is intended to be of a general nature only. MIDI Europe reserves the right to modify or change specification at any time. For further information, consult our technical department.

Color of the vehicle shown in this catalogue could differ from the real color of the vehicle.

Midi Europe advises



Publication date 02/05/2019.

